

Phi Delta Chi Alpha Sigma Alumni Association



post - Script

Volume 20 Issue 1

February 2016

In This Issue

Alpha Sigma Formal Information

PDC Memorial Scholarship Award

2016 Midwest Regional Meeting

Phi Delta Chi Continuing Education Fund

Alumni Chapter Meeting



Alpha Sigma Chapter 2016 Spring Formal

The collegiate chapter is hosting its annual spring formal at **Carnivale** on **April 8th**. The chapter as in the past welcomes alumni to the event. We don't have all of the details but if you are interested in attending please sign up using the link below. (7PM to 10PM) (\$50/person) The \$50 dollars will include dinner and one hour of bar service that includes beer and wine.

[2016 Spring Formal Sign Up Link](#)

Payment is due during the week of March 14th. Make your check out to the Phi Delta Chi Fraternity in care of:
Bhargavee Shah
8010 Aberdeen Court
Palos Heights, IL 60463

<http://www.carnivalechicago.com/>

Alpha Sigma Chapter - Phi Delta Chi Memorial Scholarship Wednesday Evening April 6th, 2016 5:30 PM - 8:00 PM

The scholarship is presented annually to a third year pharmacy student entering the last year of Pharmacy school who has demonstrated leadership in the fraternity, community outreach programs and other student organizations. Our Alumni Association recognizes the importance of this involvement as students go on to their future careers in pharmacy.

This endowment is supplemented by ongoing contributions from our Phi Delta Chi Alumni. For those wishing to donate to the PDC Memorial Scholarship Fund at the University of Illinois, please click on the link below. Then in the box indicated as "other" type:

Phi Delta Chi Memorial Scholarship.

All donations are tax deductible.

Thank You.....the PDC Alumni Association!

<http://www.pharmgiving.uic.edu>

NOTE: The first presentation of the Phi Delta Chi Memorial Scholarship took place at the College of Pharmacy, March - 2004

Phi Delta Chi Continuing Education Fund

The Phi Delta Chi - Alpha Sigma Chapter Alumni Association is happy to announce that we have officially teamed up with the University of Illinois Chicago - College of Pharmacy to deliver quality Continuing Education Programs for pharmacists and pharmacy technicians. We hope to be able to provide these CE programs at no cost to those in attendance. As many of you are aware, our alumni association was able to sponsor many CE programs in the past with the help of major pharmaceutical companies and speakers from the College of Pharmacy. The ACPE accredited programs have become costly and "Big Pharma" sponsorship has become almost non-existent.

The alumni chapter hopes to continually participate with the UIC College of Pharmacy by establishing the "**UIC COP Phi Delta Chi Continuing Education Fund**". This fund will be used to support education, lectures and programs for pharmacists, technicians and students. When fully endowed, the earnings generated would be available in the form of a grant to help defer the costs encountered when presenting a CE Program co-sponsored with the UIC College of Pharmacy. For those wishing to donate to this fund please **click** on the **secure link below** to be directed to the **University of Illinois Foundation**. **Then in the box indicated as "other" type in UIC COP Phi Delta Chi Continuing Education Fund**. All donations are tax deductible.

<http://www.pharmgiving.uic.edu>

The future endowment process of the Phi Delta Chi "CE Fund" will be a large undertaking. We hope that with everyone's help we will reach our endowment goal of \$25,000. This is a great way of giving back to the college and the fraternity.

2016 Midwest Regional Meeting in Chicago

March 18th - 20th, 2016

Meeting WEB Site: <http://phideltachi2016.wix.com/regionals>

What is the Regional Meeting all about? Below is an open letter to all Alumni Brothers of Phi Delta Chi explaining the event and requesting support.

Dear Alumni Brothers

The Alpha Sigma chapter of Phi Delta Chi will be hosting the Midwest Regional Conference in 2016. This conference will bring together chapters from all over the Midwest. We have started planning the conference, and it will feature events such as fraternity workshops, continuing education, social events, and opportunities to strengthen brotherhood among chapters.

We have dedicated much of this and last year towards fundraising for the event. We are calling to our alumni for support in order to make it as we envision. Any amount of financial support can go a long way in helping our regional meeting to be successful. We greatly appreciate alumni donations of any size. If you choose to donate we will recognize you and/or your affiliates in the regional program, which will be handed out on the first day.

On behalf of the entire Alpha Sigma chapter we thank you for your time and consideration. If you are unable to give at this time, we appreciate your support and all you have done for Phi Delta Chi- Alpha Sigma.

Sincerely,

Ashley Santore & Dawn Hyatt

Since the mailing of the above letter in January of 2015, the chapter has established a WEB page and electronic donations can now be made to the 2016 Midwest Regional Meeting via the College of Pharmacy / ILLINOIS Foundation. These electronic donations are TAX Deductible!

If you are interested in attending the meeting please visit the new outstanding and informative 2016 Regional meeting WEB site: <http://phideltachi2016.wix.com/regionals>

There are many choices listed on the "Register" page including an option for those wishing to just attend the banquet (\$75)

DONATIONS:

For those Brothers who would like to donate electronically we recommend that the donation be done through the College of Pharmacy / ILLINOIS Foundation to insure that your donation is tax deductible.

Click on the secure link below to be directed to the University of Illinois Foundation.

Scroll down to the box indicated as "other" type in:

Fund # 337283 Phi Delta Chi Regionals Fund

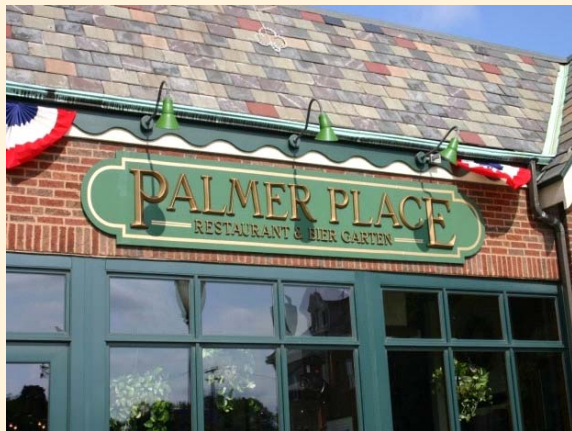
<https://pharmacy.uic.edu/sites/default/files/onlinegiving.html>

SCHOOLS THAT WILL BE REPRESENTED:

University of Wisconsin - Madison, University of Minnesota - Minneapolis, University of Minnesota - Duluth, University of Iowa, Drake University, University of Illinois at Chicago, St. Louis College of Pharmacy, Midwestern University - Downers Grove, Chicago State University, Rosalind Franklin University and Creighton University

Alumni Chapter Meeting - Sunday February 28th, 2015

The Alumni Chapter business meeting will be held at Palmer Place Restaurant - 56 South LaGrange Road in LaGrange, IL. **The meeting will begin at 1PM**. We hope to see many members at the meeting! There is plenty of parking available in the parking lot directly behind the restaurant.



[Palmer Place Web Page Link](#)

Your dues and donations help us to fund the PDC Memorial Scholarship Fund and the PDC Continuing Education Fund. We are also able to help our Collegiate Brothers with travel expenses to National Phi Delta Chi events and other professional meetings. If you know of any fellow Brothers who are not getting this newsletter, please feel free to pass this newsletter along so we can continue to grow and continue to be the leading Alumni Chapter of Phi Delta Chi!

Alpha Sigma Alumni Association Membership Form 2015-2016

Name of Alum: _____

Chapter: _____ Year of Graduation: _____

City, State, Zip Code: _____

E-mail: _____ Phone (optional): _____

Area of Pharmacy Practice: _____

Voluntary Donation to the PDC Alumni Association - Alpha Sigma Chapter (enter amount): \$ _____
Yearly dues (June 1st to May 31st) are \$20 per alum.

Dues can be paid by check, money order, and **now online** at: www.pdc-chicago.org/membership.htm

Please make all payments out to: **Phi Delta Chi Alumni Association**
 Mail payments to: **Anita Staron - 10620 Grandview Drive - Palos Park, IL. 60464**

Alumni Brothers from all regions are welcome to join our Alumni Association!