

Phi Delta Chi Alpha Sigma Alumni Association



post-Script

Volume 20 Issue 2

June 2016

In This Issue

Photos From
2016 Spring Formal

5K Walk/Run for
St. Jude Children's
Hospital

PDC Memorial
Scholarship Award

Phi Delta Chi
Continuing Education
Fund

Alumni Chapter
Meeting

Phi Delta Chi
Alpha Sigma Chapter
Class of 2016

2016 PDC Alpha Sigma
Chapter Retreat

Alpha Sigma Chapter 2016 Spring Formal Photos 4-8-2016 at "Carnivale"



A wonderful time was had by all that attended the 2016 Spring Formal at the Carnivale Restaurant in Chicago. The Alumni Brothers in attendance appreciated all of the efforts that went into making the evening a success. More photos can be viewed at the Alumni Chapter web site: [Photo Gallery - 2016 Spring Formal](#)

Phi Delta Chi 5K Walk/Run 4-17-2015



The perfect weather on the Chicago lakefront was enjoyed by all that participated. Runners from the Chicagoland area joined our Collegiate Brothers in helping to raise money for the St. Jude Children's Hospital. Those alumni that attended had high praise for the organizers of this very successful fund raising event.

Alpha Sigma Chapter - Phi Delta Chi Memorial Scholarship Wednesday Evening April 6th, 2016



The Phi Delta Chi Memorial Scholarship Fund was created by the Alpha Sigma Alumni Association in 1999. After many years of fundraising and direct donations from our members the fund became fully funded and recognized by the Illinois Foundation. One of our primary goals as an organization is the continued funding and management of this scholarship fund. Each year since 2004 the University of Illinois, College of Pharmacy Scholarship Committee has selected a student to receive the PDC Memorial Scholarship. This selection is done anonymously

to remove all bias. The selected (P3) student recipient of the scholarship must be an active member in good standing of Alpha Sigma Chapter (UIC) of Phi Delta Chi Fraternity who has participated in a chapter committee and/or served as a chapter officer and who has a reputation for community service, professionalism and leadership. This year's well deserved recipient was Brother Shelby Duncan. [Phi Delta Chi Memorial Scholarship](#)

Many other Brothers were honored at the 64th Annual Doctor of Pharmacy Honors Convocation. Congratulations to all of you: Emily Kalusetsky, Alen Landup, Dathylia Rivera, Christopher Schumpp, Anastasia Shishkoff, Jessica DaPisa, Phuc Nguyen, Paulina Sambor, Julia Sapozhnikov, Melissa Moriarty, Brett Whitten, Surafel Mulugeta, Katherine Breese, Daniel Haywood, Eldred Bell, Lauren Endriukaitis, Kristina Falk, Marissa Pasquini, Bobbiann Auer, Corinne Songer, Samantha Kush, Shelby Duncan, Michelle Lee, Nataliya Milikhiker, Josephine Kochou, Christopher Saffore, Coreliss Blue and Rene Williams.

Congratulations Class of 2016

The PDC Alumni Chapter congratulates all of the recent graduates from the University of Illinois College of Pharmacy. The Phi Delta Chi graduates should all be proud of their scholastic achievements, their leadership at the College of Pharmacy and the devotion given to our fraternity. As colleagues in the profession, we are confident that all of you will find success and fulfillment within the field of pharmacy. It is our sincere hope that the all the graduates consider membership in our Alumni Association and maintain a close bond to our Collegiate Chapter. The Alumni Chapter can serve as a bridge between scholastic and professional challenges.

Congratulations to Brothers:

Bobbiann Auer, Kateryna Bakhmut, Sarah Boudinot, Jenna Boznos, Kendall Buchmiller, Carilyn Cape, Kevin Chang, Anmol Chhabra, Christopher Dao, Jessica Dapisa, Ethan DeCota, Sibe Delisi, Alex Endiakov, Maggie Gacek, Eric Goebel, Brianna Goen, Joseph Gomez, Phil Hodur, Lauren Holtz, Daniel Johnson, Snjezana Jovanovic, Anna Jozefiak, Dijana Keljalic, Josephine Kochou, Carmen Kotfisz, Samantha Kush, Tiffany Lai, Alen Landup, Jenny Le, Katherine Lee, Michelle Lee, Vivian Liang, Nicholas Liu, Melissa Moriarty, Surafel Mulugeta, Syed Munawer, Cong Nguyen, Matthew Novak, Nadine Panagakis, Sonam Patel, Corinne Puchalla, Christopher Saffore, Kristen Savas, Neil Schroeder, Christopher Schumpp, Christopher Siegler, Hailey Steuber, Amina Suta, Elena Telebak, Alisa Terry, Kristine Valen, Brett Whitten, Rodnita Williams and Kate Ziemba

Collegiate Chapter Retreat and Alumni Chapter Meeting Sunday August 21st, 2016

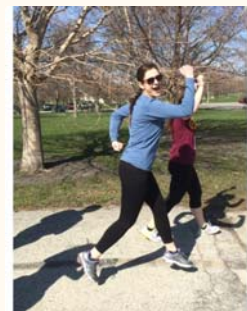
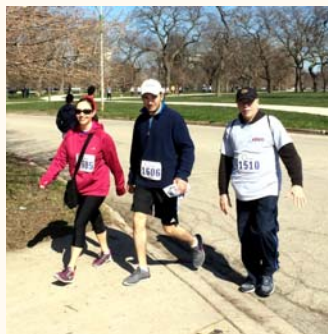
As in the past the Alumni Chapter has reserved a shelter at Blackwell Forest Preserve. The park entrance is on Butterfield Rd. (Hwy 56), just North of I-88. (Exit I-88 at Winfield Road - North)
Open the link below for information and maps.

http://www.dupageforest.org/Conservation/Forest_Preserves/Blackwell.aspx

When visiting the Blackwell WEB page please click on the **South MAP** link and download the detailed PDF map.

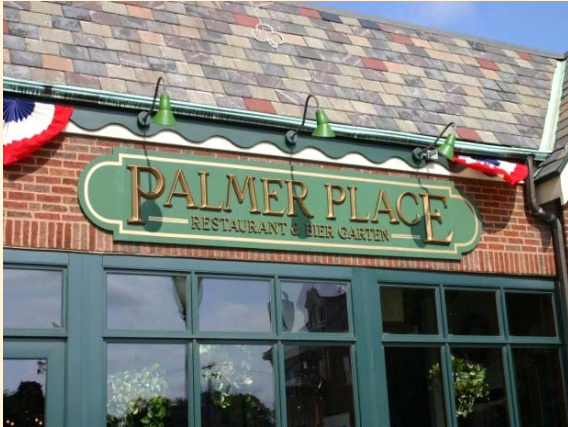
The retreat is scheduled to begin at **9:15AM** at the **WEST SHELTER**. (shelter is located west of the Boat Rentals) Refreshments for the meeting and lunch will be provided by the Alumni Chapter. Burgers and Brats will be cooked by "Chef Ron" and "Chef Ray". There will also be side dishes galore, water and assorted sodas. **(NO Alcohol allowed in the park)** Alumni are invited to participate in the Collegiate Chapter Retreat or just attend the picnic lunch at **12:00 PM with your family**. Immediately after lunch, the Alumni Chapter will conduct a short business meeting. **Please let us know if you are planning on joining the Collegiate Chapter for lunch.** All family members are invited.

Photos from the PDC 5K Run/Walk Benefiting the St. Jude Children's Hospital



Alumni Chapter Meeting - Sunday June 5th, 2016

The Alumni Chapter business meeting will be held at Palmer Place Restaurant - 56 South LaGrange Road in LaGrange, IL. **The meeting will begin at 1PM**. We hope to see many members at the meeting! There is plenty of parking available in the parking lot directly behind the restaurant.



[Palmer Place Web Page Link](#)

Your dues and donations help us to fund the PDC Memorial Scholarship Fund and the PDC Continuing Education Fund. We are also able to help our Collegiate Brothers with travel expenses to National Phi Delta Chi events and other professional meetings. If you know of any fellow Brothers who are not getting this newsletter, please feel free to pass this newsletter along so we can continue to grow and continue to be the leading Alumni Chapter of Phi Delta Chi!

Alpha Sigma Alumni Association Membership Form 2016-2017

Name of Alum: _____

Chapter: _____ Year of Graduation: _____

City, State, Zip Code: _____

E-mail: _____ Phone (optional): _____

Area of Pharmacy Practice: _____

Voluntary Donation to the PDC Alumni Association - Alpha Sigma Chapter (enter amount): \$ _____
Yearly dues (June 1st to May 31st) are \$20 per alum.

Dues can be paid by check, money order, and **now online** at: www.pdc-chicago.org/membership.htm

Please make all payments out to: **Phi Delta Chi Alumni Association**
 Mail payments to: **Anita Staron - 10620 Grandview Drive - Palos Park, IL. 60464**

Alumni Brothers from all regions are welcome to join our Alumni Association!