

Phi Delta Chi Alpha Sigma Alumni Association



Volume 20 Issue 6

December 2016

Initiation 2016

 **Happy Holidays** 



"Celebrate the happiness that friends are always giving, make every day a holiday and celebrate just living!" Amanda Bradley

The Alumni Association wishes everyone a wonderful holiday season and a prosperous New Year! This year, the collegiate chapter initiated 42 new Phi Delta Chi Brothers on November 11th. **Congratulations** to all the new initiates welcomed as Brothers of the Alpha Sigma Chapter!! Congratulations to Debra Ann Fox, who was made an Honorary Graduate Brother of the Alpha Sigma Chapter on November 18th. Deb, an Associate Director of Development, works tirelessly on campus in the Pharmacy Advancement Department. She is always there to help students and alumni of our beloved chapter.

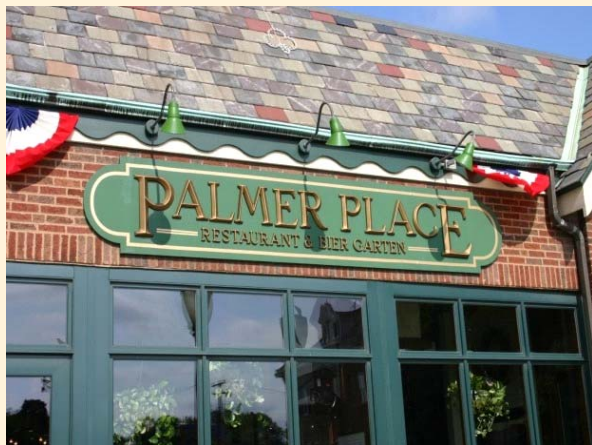
For over 60 glorious years, the Alpha Sigma Collegiate Chapter has been one of the largest; most dedicated, and motivated student organizations on the University of Illinois - Chicago campus. Our PDC Alumni Chapter members have supported our Collegiate Brothers by attending functions, donating money and donating time to help support professional and community projects. We appreciate all of the support our membership has given to both the Alumni and Collegiate Chapters.

Our 2016 Brothers: Natasha Barrow, Katie Berry, Hannah Brennan, Ola Bulakh, Nichole Cabral, Jessica Carlson, Paul Cichon, Jenna Crosby, MareChris Domingo, Madeline Gault, Victoria Gavaghan, Sophia Gilardone, Kent Hanson, Holland Harmon, Ian Hesch, Jaime Holden, Joanna Kuczak, Malgorzata Labedz, Denise Lamm, Kirsten Larson, Amy Lawando, Jeremy Lerner, Paula Lewkowski, Kristin Mancillas, Victoria Marshall, Taylor McDonald, Shannon Menard, Rian Neuzil, Henry Okoroike, Sandra Oyibo, Marianne Palzewski, Andrew Posen, Hali Ramirez, Samona Rawal, Zaheera Shabbir, Anisa Shalabi, Sarette Tilton, Darius Tumminello, Emily Viehl, Amanda Walsh, Tiera Williams, Brenna Wing and Deb Fox.

We wish all of our Phi Delta Chi Brothers a great New Year, and we hope to see many of you at PDC sponsored events in 2017!

Alumni Chapter Meeting 3-26-2017

The Alumni Chapter business meeting will be held at Palmer Place Restaurant - 56 South LaGrange Road in LaGrange, IL. **The meeting will begin at 1PM**. We hope to see many members at the meeting! There is plenty of parking available in the parking lot directly behind the restaurant.



[Palmer Place Web Page Link](#)

2016 Initiates



2016 Initiates with the E-Board and Advisor Dr. Tommy Chiampas



Giving Back to Our Alma Mater

As you probably know, our Alpha Sigma Alumni Chapter is involved with many of the ongoing events sponsored by the Collegiate Chapter and the UIC College of Pharmacy. We have set up two charitable gift accounts with the University of Illinois Foundation in Champaign/ Urbana. Both are administered by the College of Pharmacy: the "UIC Phi Delta Chi Memorial Award Fund" and the "UIC College of Pharmacy - Phi Delta Chi Continuing Education Fund". The funding of both depends upon the generosity of all Alpha Sigma Alumni. Any donation is greatly appreciated by our Alma Mater and our collegiate chapter Brothers. The accounts are described below with links and instructions to the College of Pharmacy's online gift giving web site.

UIC Phi Delta Chi Memorial Award Fund

The scholarship is presented annually to a third year pharmacy student entering the last year of Pharmacy school who has demonstrated leadership in the fraternity, community outreach programs and other student organizations. Our Alumni Association recognizes the importance of this involvement as students go on to their future careers in pharmacy.

This endowment is supplemented by ongoing contributions from our PDC Alumni. For those wishing to donate to the Phi Delta Chi Memorial Scholarship Fund at the University of Illinois, please click on the secure link below. Then select "Donate Online"

In the box indicated as "other" please type:

Phi Delta Chi Memorial Scholarship # 772143

All donations are tax deductible.

Thank You.....the PDC Alumni Association!

[UIC College of Pharmacy Alumni Giving Link](#)

UIC Phi Delta Chi Continuing Education Fund

The Phi Delta Chi - Alpha Sigma Chapter Alumni Association has teamed up with the University of Illinois Chicago - College of Pharmacy to deliver quality Continuing Education Programs for pharmacists and pharmacy technicians. We hope to be able to provide these CE programs at no cost to those in attendance. As many of you are aware, our alumni association was able to sponsor many CE programs in the past with the help of major pharmaceutical companies and speakers from the College of Pharmacy. The ACPE accredited programs have become costly and "Big Pharma" sponsorship has become almost non-existent.

The alumni chapter hopes to continually participate with the UIC College of Pharmacy by establishing the "**UIC COP Phi Delta Chi Continuing Education Fund**". This fund will be used to support education, lectures and programs for pharmacists, technicians and students. When fully endowed, the earnings generated would be available in the form of a grant to help defer the costs encountered when presenting a CE Program co-sponsored with the UIC College of Pharmacy. For those wishing to donate to this fund please click on the secure link below. Then select "Donate Online"

In the box indicated as "other" please type:

UIC Phi Delta Chi Continuing Education Fund #338096 **All donations are tax deductible.**

[UIC College of Pharmacy Alumni Giving Link](#)

The future endowment process of the Phi Delta Chi "CE Fund" will be a large undertaking. We hope that with everyone's help we will reach our endowment goal of \$25,000. This is a great way of giving back to the college and the fraternity.

ABOUT THE ALPHA SIGMA ALUMNI CHAPTER

We are the Alpha Sigma Alumni Chapter of the Phi Delta Chi Pharmacy Fraternity. While we are based primarily out of the University of Illinois at Chicago College of Pharmacy (UICOP) as the Alpha Sigma Collegiate Chapter, we represent a union of all local Phi Delta Chi alumni, graduating from any school, and from any chapter that either works, resides in, or generally enjoys the Chicagoland area.

Our Alumni Chapter was founded on November 10, 1996 with the charge to:

- Promote the overall interests of the pharmacy profession
- Assist graduating Phi Delta Chi brothers in their transition from collegiate to alumni status, by demonstrating that brotherhood does not end with graduation
- Assist the collegiate chapter in their functions and operations as it relates to activities on and off the College of Pharmacy campus
- An ongoing commitment of funding and management of the Phi Delta Chi Memorial Scholarship

Your dues and donations help us to continue funding the PDC Memorial Scholarship Fund, and most of all, help the Collegiate Chapter with travel expenses to National PDC and Professional Meetings.

If you know of any fellow Brothers who are not getting this newsletter, please feel free to pass this newsletter along so we can continue to grow and continue to be the leading Alumni Chapter of Phi Delta Chi!
To all the Brothers that have already joined our alumni chapter, we thank you!!!

Alpha Sigma Alumni Association Membership Form 2016-2017

Name of Alum: _____

Chapter: _____ Year of Graduation: _____

City, State, Zip Code: _____

E-mail: _____ Phone: _____

Area of Pharmacy Practice: _____

Voluntary Donation to the PDC Alumni Association - Alpha Sigma Chapter (enter amount): \$ _____
Yearly dues (June 1st to May 31st) are \$20 per alum.

Dues can be paid by check, money order, and online at: www.PDC-Chicago.org/membership.htm

Please make all payments out to: **Phi Delta Chi Alumni Association**
 Mail payments to: **Anita Staron - 10620 Grandview Drive - Palos Park, IL. 60464**
Alumni Brothers from all chapters are welcome to join our Alumni Association!